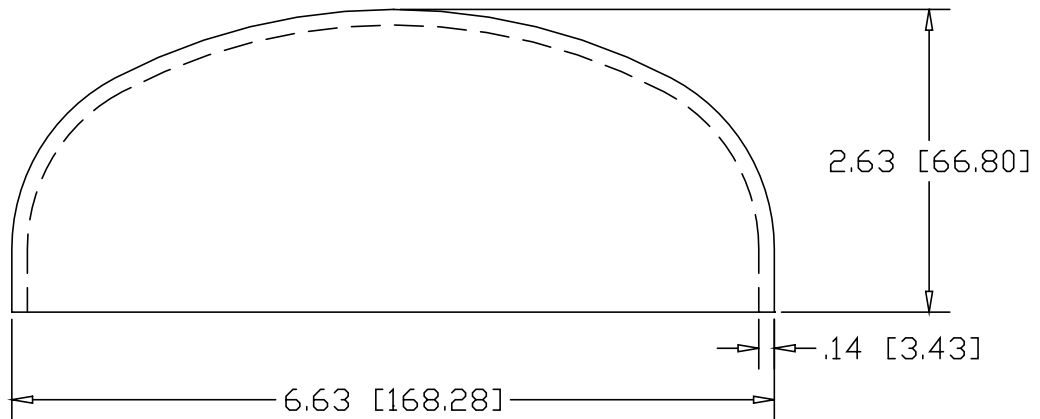
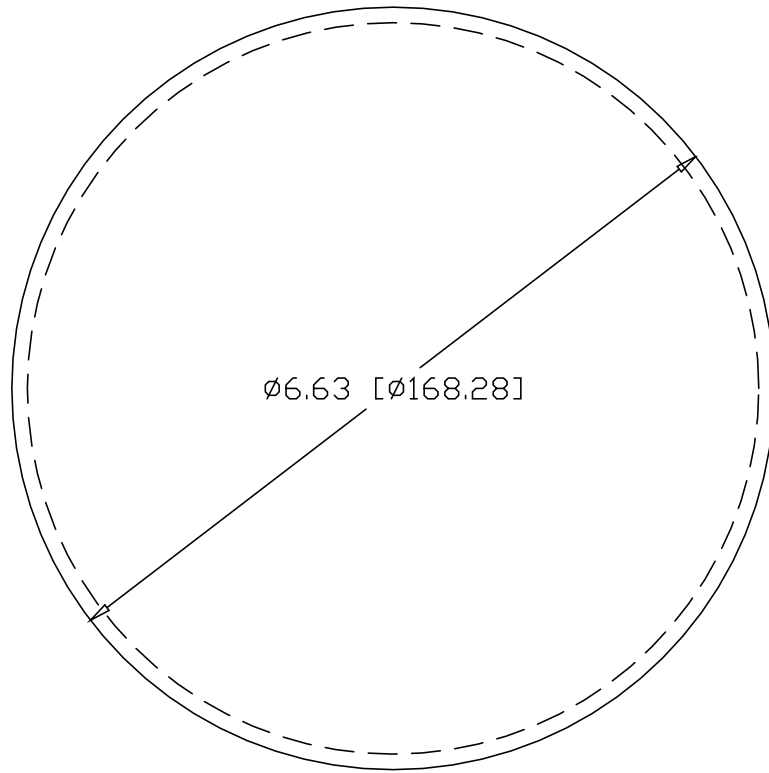



REV
SH
3225-6
DWG NO

REVISIONS			
REV	DESCRIPTION	DATE	APPROVED



INCHES [MILLIMETERS]

PART NAME		6" PIPE SIZE TYPE "C" WELD-ON END CAP					
MATERIAL		10 GA. (.1345) HRP&O STEEL					
DATE	4/9/03		THE WAGNER COMPANIES R & B WAGNER, INC. AND J. G. BRAUN CO.				
DRAWN BY	RJF						
FINISH	MILL						
SIZE	A	WEIGHT	2.42 LBS	PART NUMBER	3225-6	REV	