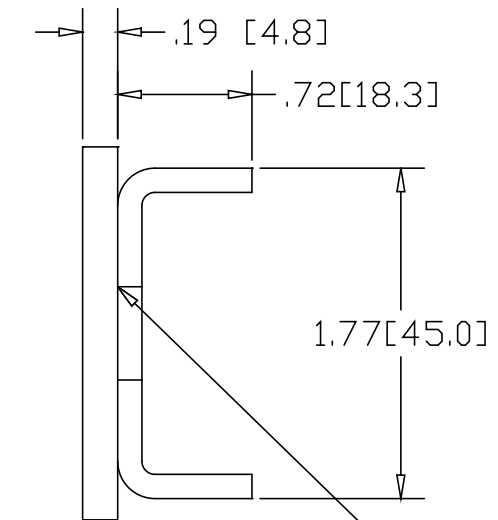
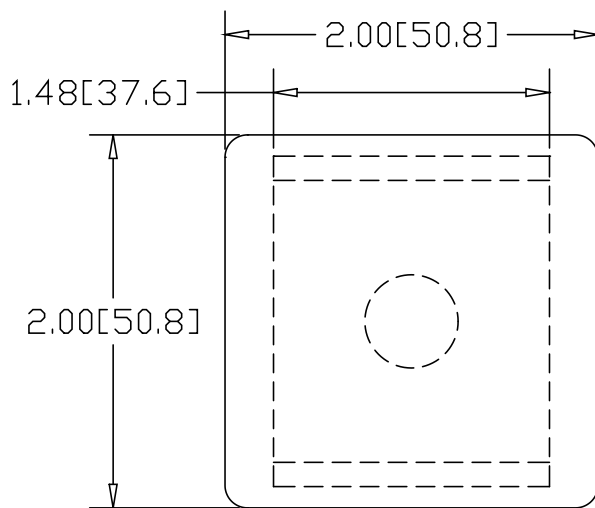


REV A
SH
3202-A
DWG NO


REVISIONS			
REV	DESCRIPTION	DATE	APPROVED
A	PLUG WELD WAS SPOT WELD	08/30/10	RJF



PLUG WELD

INCHES [MILLIMETERS]

ALTERNATE MATERIAL	PART NUMBER

PART NAME		2.00" SQUARE X .125 WALL DRIVE-ON CAP	
MATERIAL		.190 (3003) ALUMINUM ASTM B209	
DATE	6/3/98	 THE WAGNER COMPANIES R & B WAGNER, INC. AND J. G. BRAUN CO.	PART NUMBER 3202-A
DRAWN BY	RJF		
FINISH	MILL		
SIZE	A	WEIGHT	.13 LBS
		REV	A