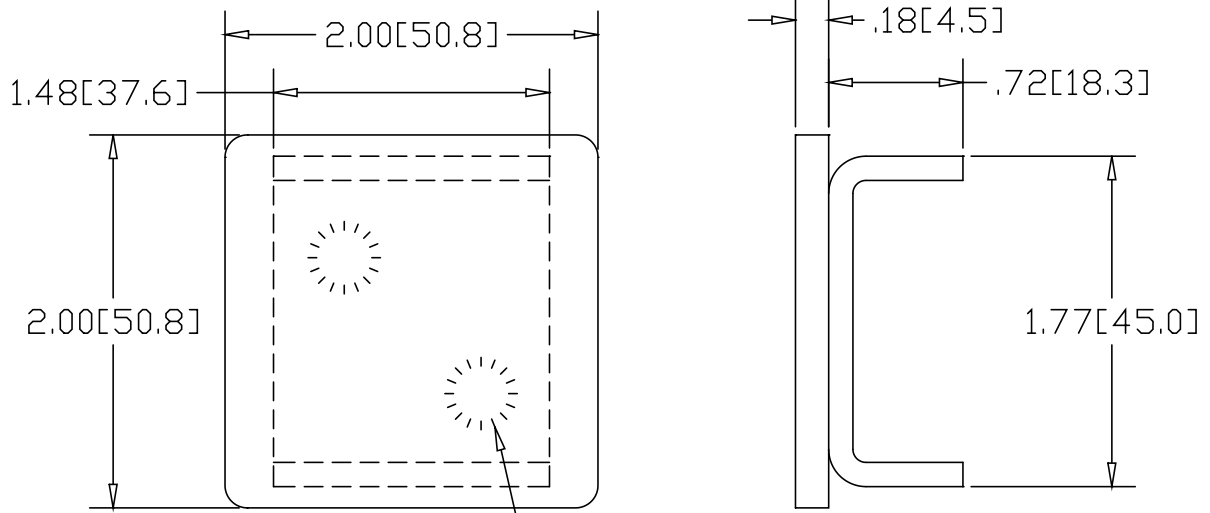


REV
SH
3202-11
DWG NO


REVISIONS			
REV	DESCRIPTION	DATE	APPROVED



SPOT WELD

INCHES [MILLIMETERS]

ALTERNATE MATERIAL	PART NUMBER
.190 (3003) ALUMINUM ASTM B209	3202-A

PART NAME		2.00" SQUARE X .120 WALL DRIVE-ON CAP	
MATERIAL		7 GA. HRP&D STEEL ASTM A569	
DATE	6/3/98	 THE WAGNER COMPANIES R & B WAGNER, INC. AND J. G. BRAUN CO.	
DRAWN BY	RJF		
FINISH	MILL		
SIZE	A	WEIGHT	.33 LBS
		PART NUMBER	3202-11
		REV	