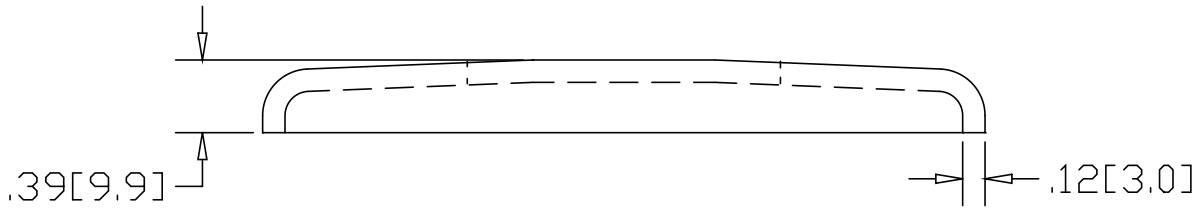
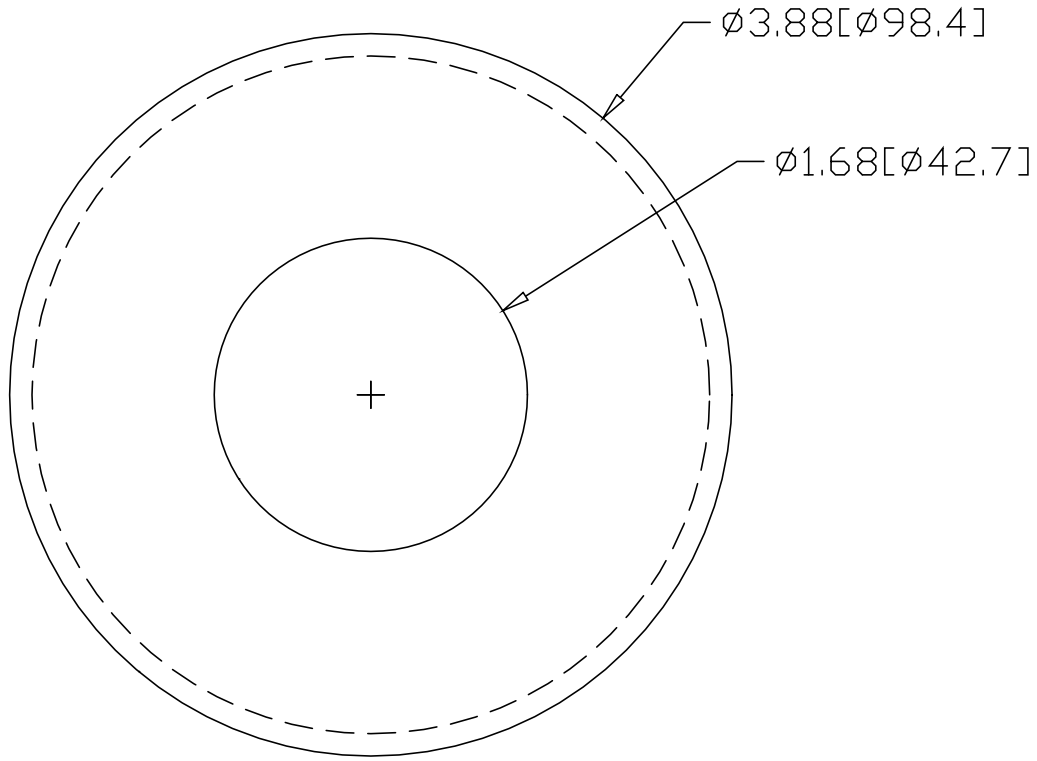



REV  
SH  
2526  
DWG NO

REVISIONS			
REV	DESCRIPTION	DATE	APPROVED



INCHES [MILLIMETERS]

ALTERNATE MATERIAL	PART NUMBER
.125 (3003) ALUMINUM ASTM B209	2566
10 GA. (304) STAINLESS STEEL ASTM A240	2606
.125 (280) MUNTZ METAL	BZ2526

PART NAME		1-1/4" PIPE HEAVY FLUSH BASE FLANGE			
MATERIAL		10 GA. HRP&D STEEL ASTM A569			
DATE	3/31/99	 <b>R &amp; B WAGNER, INC.</b>			
DRAWN BY	RJF				
FINISH	MILL	SIZE	WEIGHT	PART NUMBER	REV
		A	.5 LBS	2526	