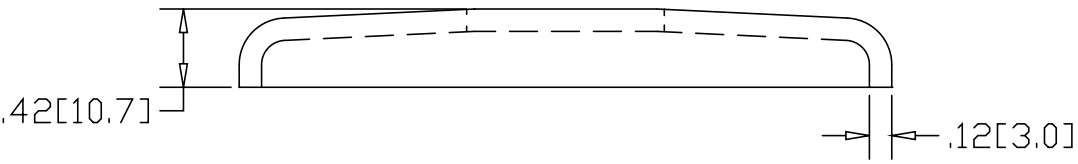
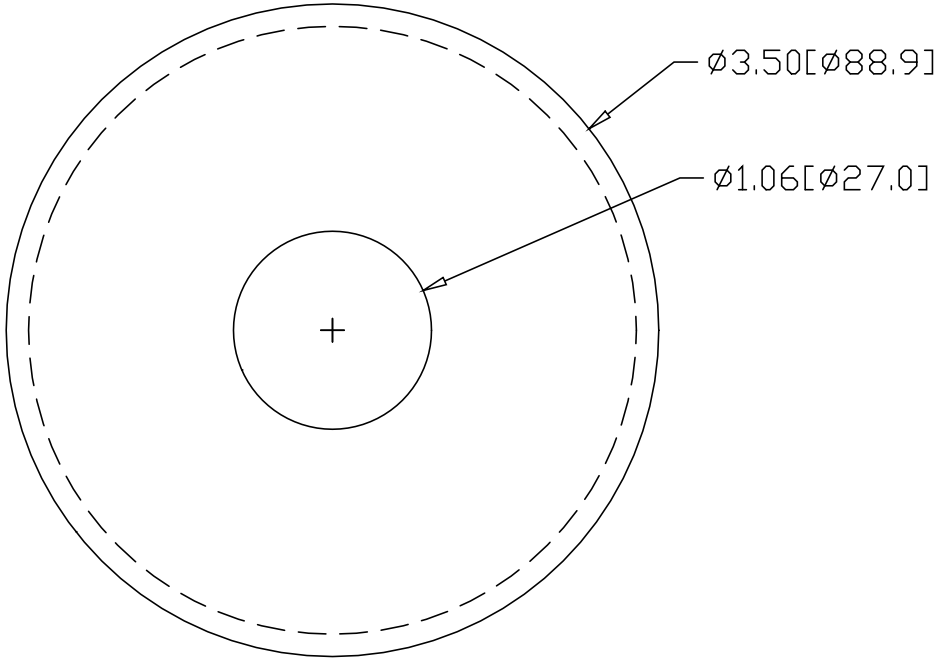



REV
SH
2510
DWG NO

REVISIONS			
REV	DESCRIPTION	DATE	APPROVED



INCHES [MILLIMETERS]

ALTERNATE MATERIAL	PART NUMBER
.125 (3003) ALUMINUM ASTM B209	2550
10 GA. (304) STAINLESS STEEL ASTM A240	2590
.125 (280) MUNTZ METAL	BZ2510

PART NAME					3/4" PIPE HEAVY FLUSH BASE FLANGE				
MATERIAL					10 GA. HRP&D STEEL ASTM A569				
DATE		3/31/99			 R & B WAGNER, INC.				
DRAWN BY		RJF							
FINISH		MILL		SIZE	WEIGHT	PART NUMBER		REV	
				A	.41 LBS	2510			