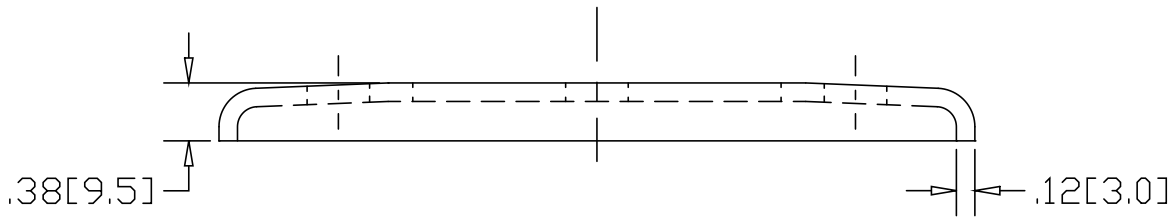
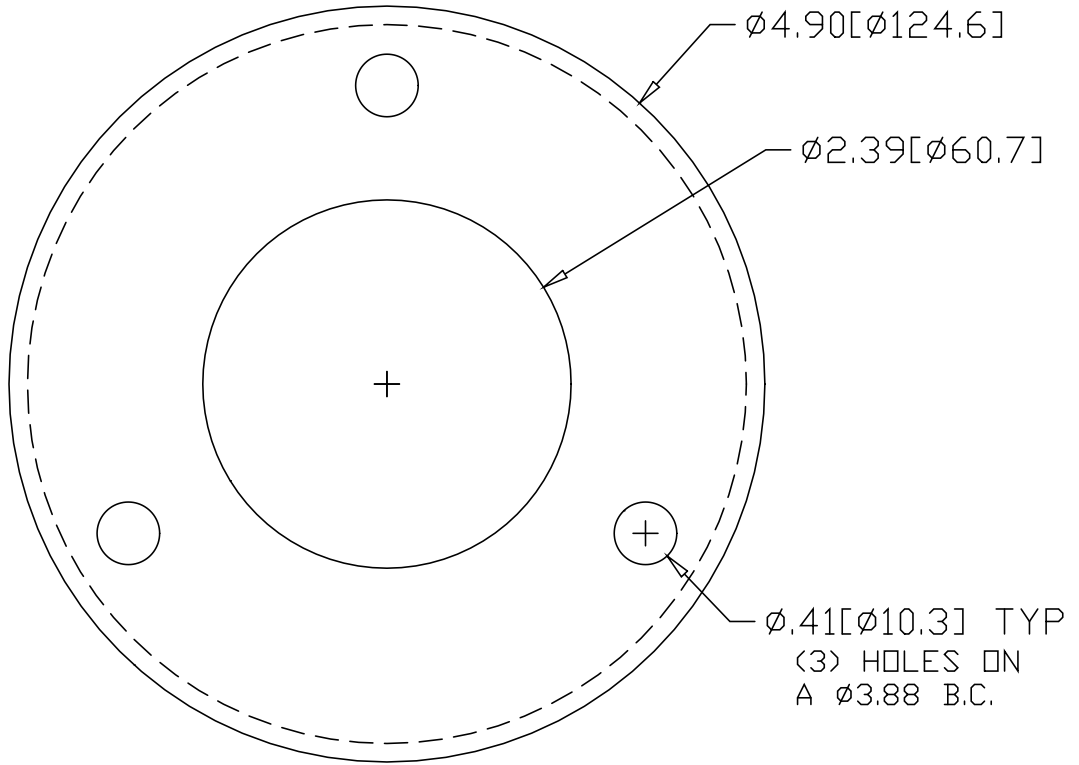


REV
SH
2543A
DWG NO


| REVISIONS | | | |
|-----------|-------------|------|----------|
| REV | DESCRIPTION | DATE | APPROVED |



INCHES [MILLIMETERS]

*USE WITH ANCHOR PLATE
 #B1448 IN STEEL
 #PLB1448 ZINC PLATED STEEL
 #B1548 IN STAINLESS

| ALTERNATE MATERIAL | PART NUMBER |
|--|-------------|
| .125 (3003) ALUMINUM ASTM B209 | 2583A |
| 10 GA. (304) STAINLESS STEEL ASTM A240 | 2623A |

| | | | |
|---|---|----------------|-------------------|
| PART NAME 2" PIPE HEAVY FLUSH BASE FLANGE W/(3) HOLES | | | |
| MATERIAL 10 GA. HRP&D STEEL ASTM A569 | | | |
| DATE 4/5/99 |  R & B WAGNER, INC. | | |
| DRAWN BY RJF | | | |
| FINISH MILL | SIZE A | WEIGHT .72 LBS | PART NUMBER 2543A |
| | | | REV |