

REV

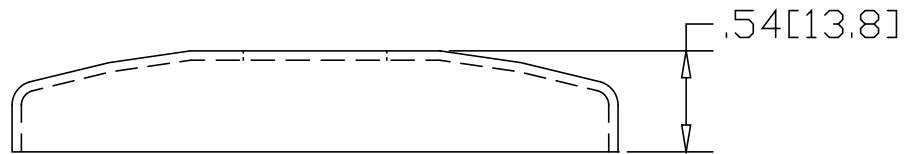
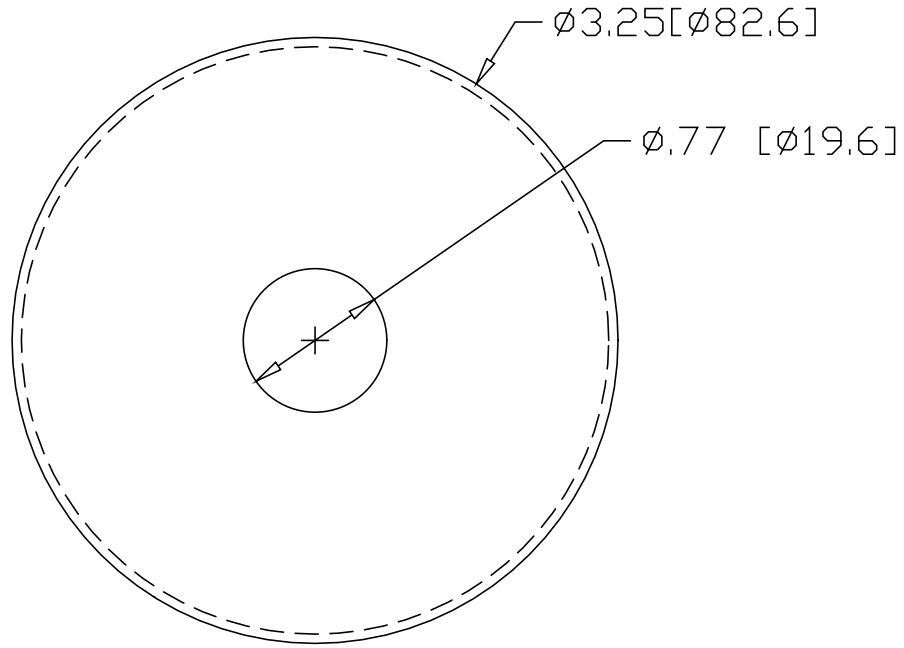
SH

2041

DWG NO

REVISIONS


REV	DESCRIPTION	DATE	APPROVED
-----	-------------	------	----------



* USE WITH BASE
 #2041B IN STEEL
 #2042B IN ALUMINUM
 #2043B IN STAINLESS
 #2044B IN BRASS

INCHES [MILLIMETERS]

ALTERNATE MATERIAL	PART NUMBER
.063 (3003) ALUMINUM ASTM B209	2042
18 GA. (304) STAINLESS STEEL A240	2043
.050 (260) BRASS B19,B36	2044

PART NAME		.75" OD TUBE SNAP COVER	
MATERIAL		18 GA. CR STEEL ASTM A366	
DATE	01/07/03	 R & B WAGNER, INC.	
DRAWN BY	RJF		
FINISH	MILL	SIZE	A
		WEIGHT	.13 LBS
		PART NUMBER	2041
			REV