

REV

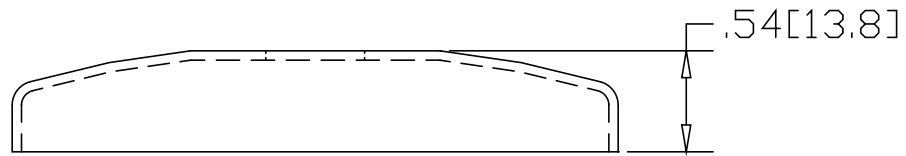
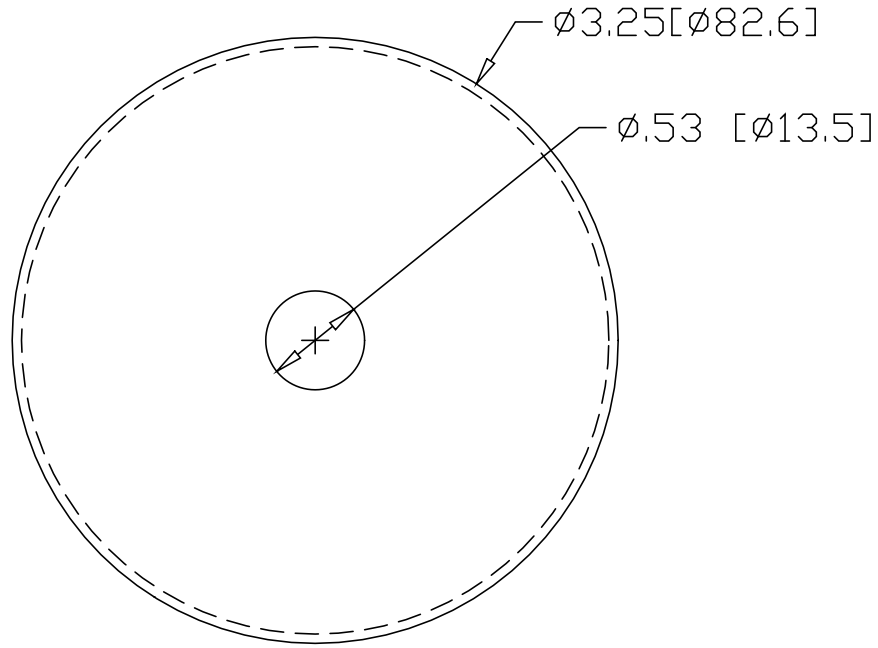
SH

2021

DWG NO

REVISIONS


| REV | DESCRIPTION | DATE | APPROVED |
|-----|-------------|------|----------|
|-----|-------------|------|----------|



* USE WITH BASE
 #2021B IN STEEL
 #2022B IN ALUMINUM
 #2023B IN STAINLESS
 #2024B IN BRASS

INCHES [MILLIMETERS]

| ALTERNATE MATERIAL | PART NUMBER |
|-----------------------------------|-------------|
| .063 (3003) ALUMINUM ASTM B209 | 2022 |
| 18 GA. (304) STAINLESS STEEL A240 | 2023 |
| .050 (260) BRASS B19,B36 | 2024 |

| | | | | |
|-----------|----------|---|---------|-------------|
| PART NAME | | .50" OD TUBE SNAP COVER | | |
| MATERIAL | | 18 GA. CR STEEL ASTM A366 | | |
| DATE | 01/07/03 |  R & B WAGNER, INC. | | |
| DRAWN BY | RJF | | | |
| FINISH | MILL | SIZE | WEIGHT | PART NUMBER |
| | | A | .13 LBS | 2021 |
| | | | | REV |