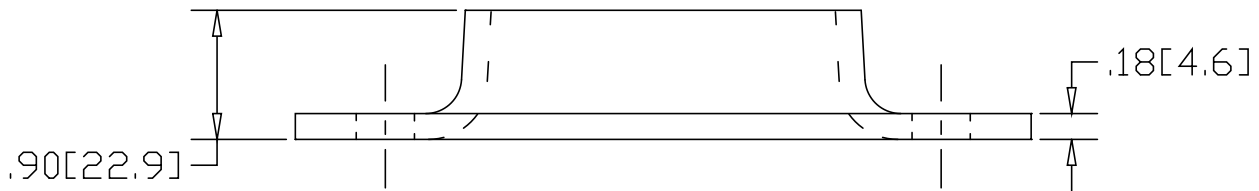
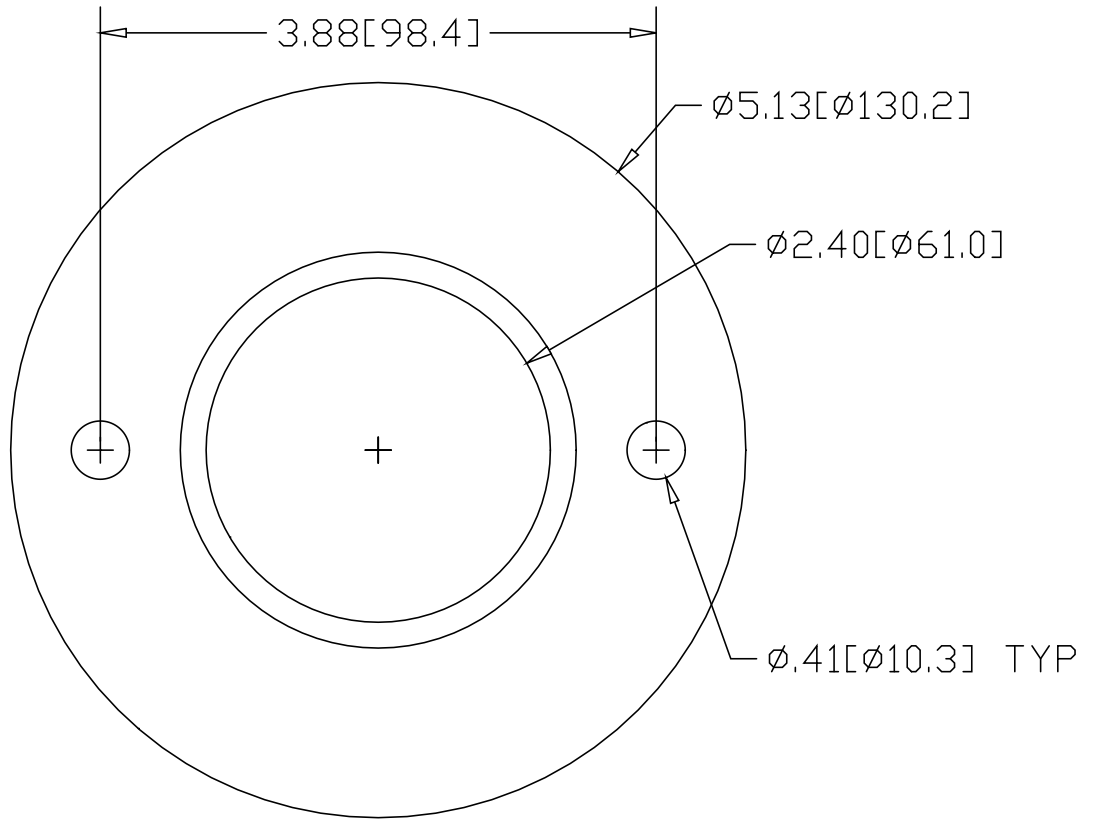


REV  
SH  
1661  
DWG NO

REVISIONS			
REV	DESCRIPTION	DATE	APPROVED



INCHES [MILLIMETERS]

\*USE WITH ANCHOR PLATE  
#B1668 IN STEEL  
#B1678 IN ALUMINUM

ALTERNATE MATERIAL	PART NUMBER
.19 (3003) ALUMINUM ASTM B-209	1671

PART NAME 2" PIPE SIZE EXTRA HEAVY FLANGE W/(2) HOLES				
MATERIAL 7 GA. HRP&D STEEL ASTM A-569				
DATE 3/2/95				
DRAWN BY RJF				
FINISH MILL	SIZE A	WEIGHT .94 LBS	PART NUMBER 1661	REV