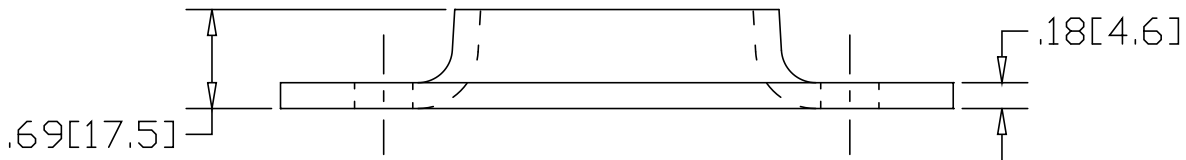
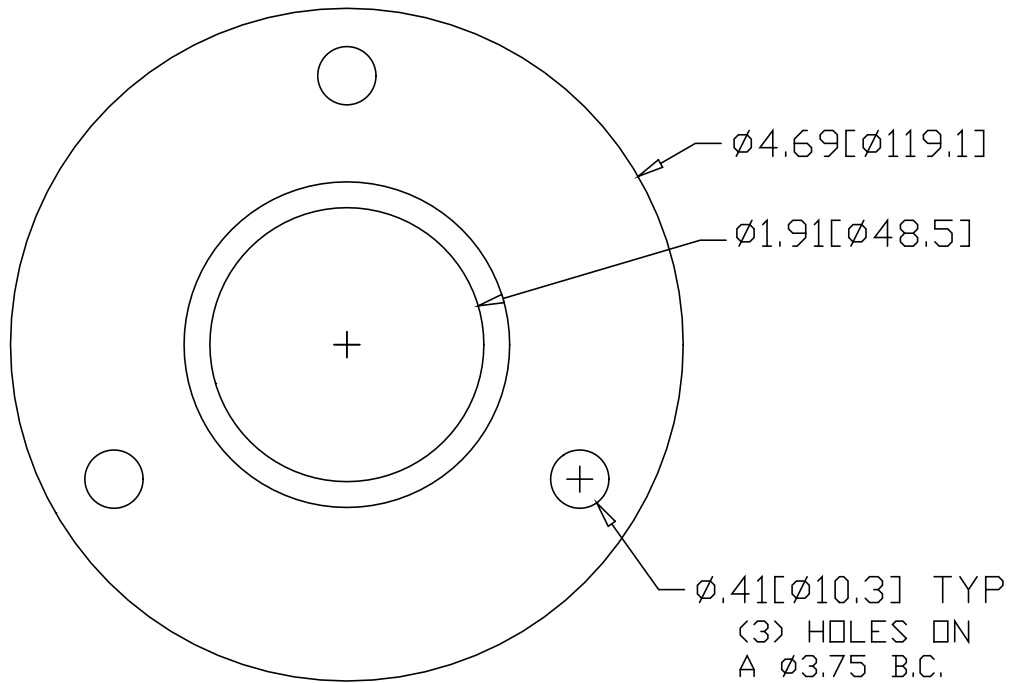


REV
SH
1622
DWG NO

REVISIONS			
REV	DESCRIPTION	DATE	APPROVED



INCHES [MILLIMETERS]

*USE WITH ANCHOR PLATE
 #B1628 IN STEEL
 #B1648 IN ALUMINUM

ALTERNATE MATERIAL	PART NUMBER
.190 (3003) ALUMINUM ASTM B-209	1642

PART NAME 1-1/2" PIPE SIZE EXTRA HEAVY FLANGE W/(3) HOLES			
MATERIAL 7 GA. HPR&D STEEL ASTM A-569			
DATE 3/2/95			
DRAWN BY RJF			
FINISH MILL	SIZE A	WEIGHT .81 LBS	PART NUMBER 1622
			REV