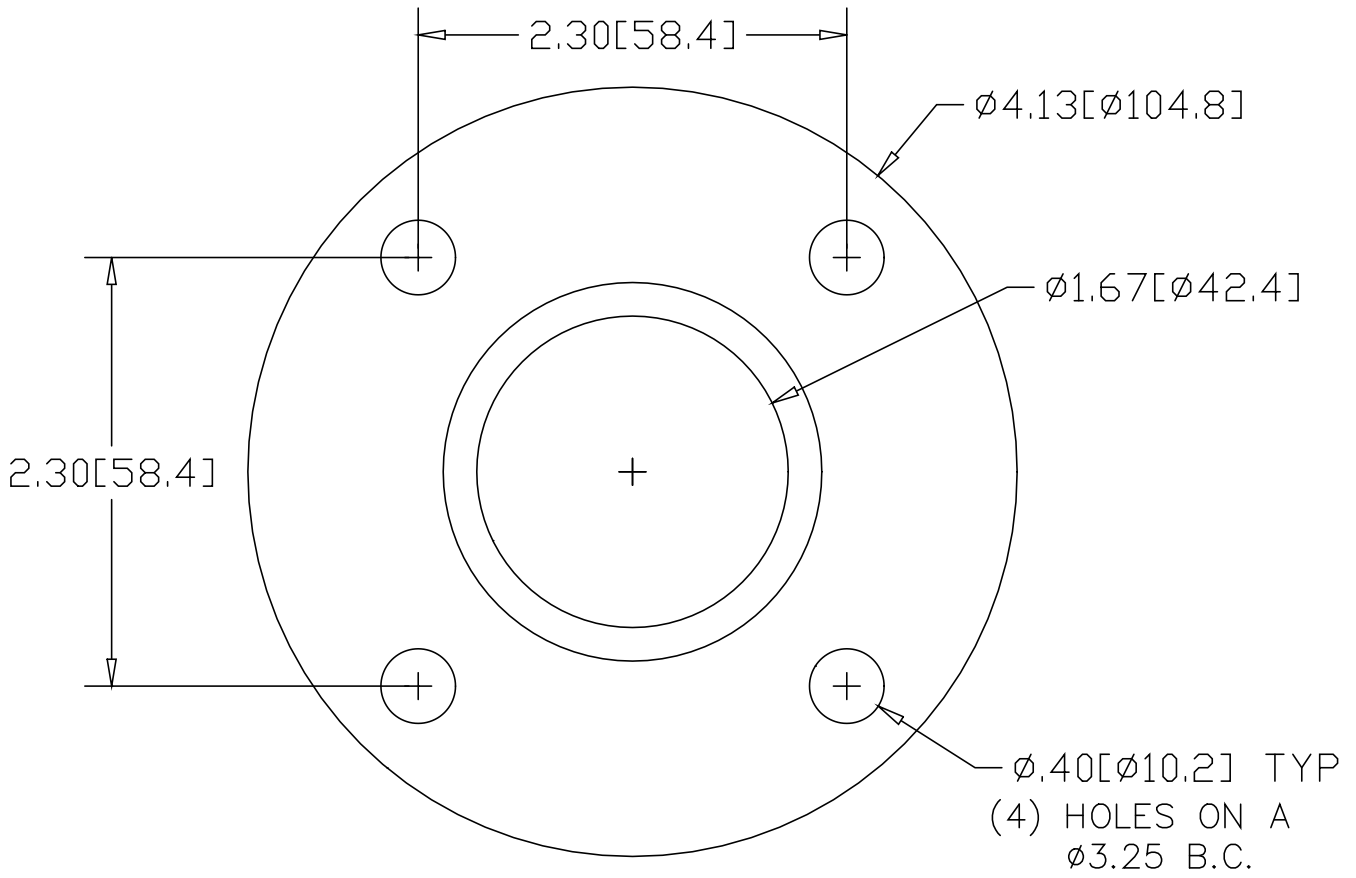


REV
SH
1613
DWG NO


REVISIONS			
REV	DESCRIPTION	DATE	APPROVED



INCHES [MILLIMETERS]

*USE WITH ANCHOR PLATE
#B1608 IN STEEL
#B1658 IN ALUMINUM

ALTERNATE MATERIAL	PART NUMBER
3/16" (3003) ALUMINUM ASTM B-209	1633

PART NAME 1-1/4" PIPE SIZE EXTRA HEAVY FLANGE W/(4) HOLES			
MATERIAL 3/16" HRP&O STEEL ASTM A-569			
DATE 1/15/95	 R & B WAGNER, INC.		
DRAWN BY RJF			
FINISH MILL	SIZE A	WEIGHT .6 LBS	PART NUMBER 1613
			REV