

REV

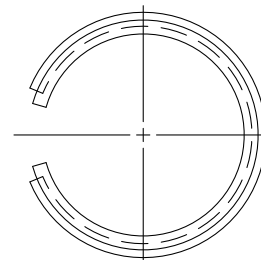
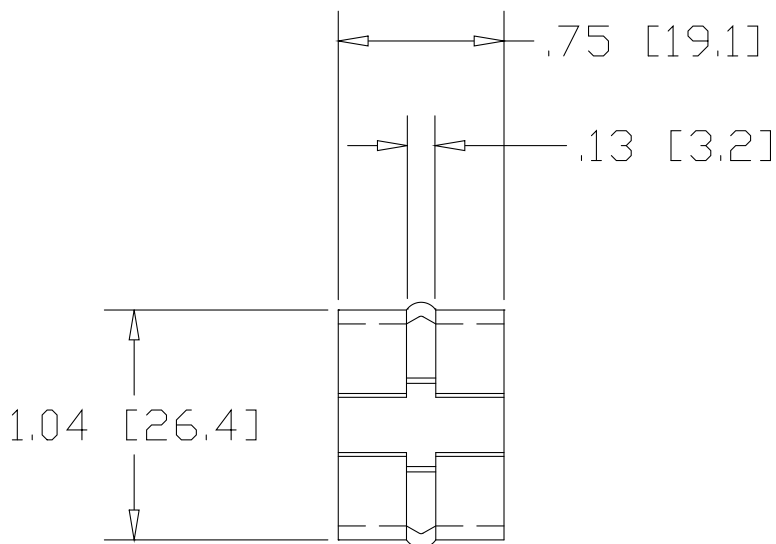
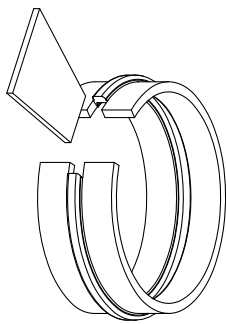
SH

1013

DWG NO

REVISIONS

REV	DESCRIPTION	DATE	APPROVED
-----	-------------	------	----------



INCHES [MILLIMETERS]

ALTERNATE MATERIAL	PART NUMBER
.063 (3003) ALUMINUM ASTM B209	1014
.0595 (304) STAINLESS STEEL ASTM A240	1015

PART NAME 1.25" OD .065W TUBE WEDGE-LOCK WELDING CONNECTOR			
MATERIAL 16 GA. (.063) HRP&D STEEL ASTM A569			
DATE 10/10/01		THE WAGNER COMPANIES R & B WAGNER, INC. AND J. G. BRAUN CO.	
DRAWN BY JAH			
FINISH MILL	SIZE A	WEIGHT .03 LBS	PART NUMBER 1013
			REV